

# DEREKTOR 45m High Speed Ferry

The Fastest Passenger-Only Ferry in the World



Sleek-lined and extremely fast, this catamaran ferry designed by Nigel Gee Associates and styled by Pininfarina is built by Derecktor to the highest quality standards with ABS, IMO HSC and USCG Sub H full compliance. It carries 300 passengers at a continuous-rating service speed of 53 knots

The main deck seats 244 passengers in airline type reclining seats and features a bar, a duty-free shop and four toilets aft. The upper deck has 48 seats, a VIP lounge, a small bar and two toilets. Noise levels on board are 76 dB(A) in the main saloon, 72 dB(A) in the upper saloon and 66 dB(A) in the wheelhouse.

The boat is fitted with a full ride control system by Maritime Dynamics comprising a bow T-foil and a stern trim flap on each hull, affording superior comfort and a smooth ride in sea conditions up to sea-state 4. The wake-wash generated by this new hull design is extremely low, even at very high speeds.

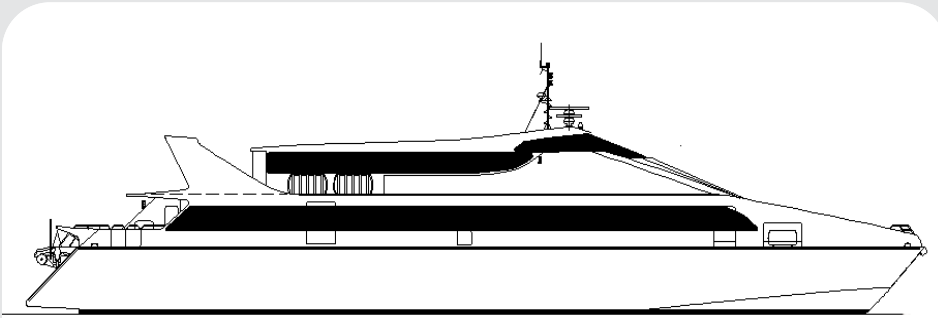


DEREKTOR SHIPYARDS

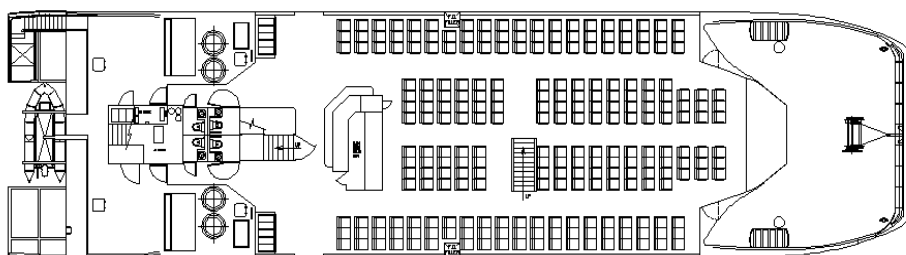
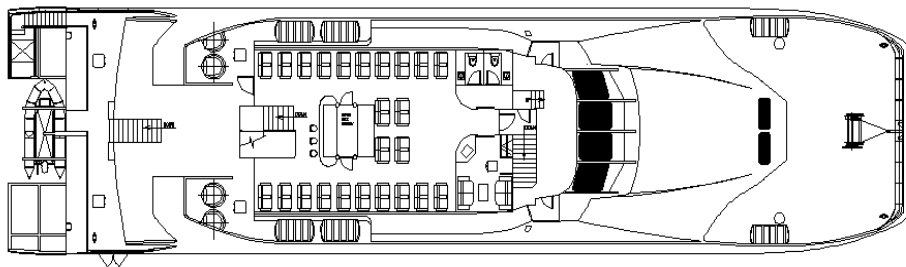
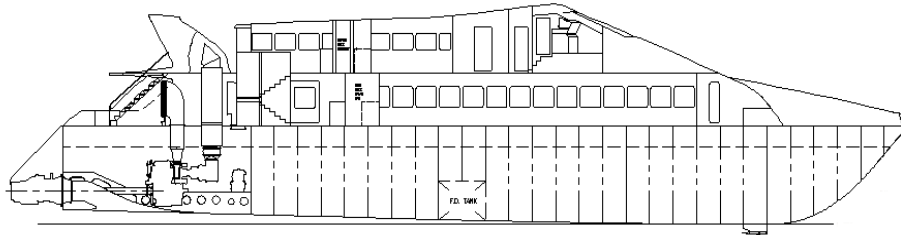
Since 1947

[www.derektor.com](http://www.derektor.com)

311 E. Boston Post Rd, Mamaroneck, New York 10543, USA



Type: High Speed Ferry  
Designer: Nigel Gee  
LOA: 45.60m  
LWL: 40.15m  
Beam: 11.80m  
Draft: 1.80m  
Deadwt.: 42.5 tonnes  
Service Speed: 53 knots  
Engines: 2 x Detroit TF 80  
5,535 kW at 15,400 rpm  
Aux. Power: 2 x Northern  
Lights M668TH 99 kW  
Waterjets: 2 x MJP 950-DD  
Hull & Superstr: Aluminum  
Passengers: 300  
Class: ABS + A1 HSC +  
AMS/H Boat - Oceans



Gas turbine propulsion delivers the necessary power for the required high performance. Twin AlliedSignal TF40 turbines are directly mounted in each hull onto a Cincinnati MA 107 gearbox that reduces the input speed of 15,400 rpm from each turbine to the maximum operating speed of 765 rpm of a single MJP 950 waterjet.

At slower vessel speeds, single turbine operation is made possible by independent clutches on the turbine input shafts, also allowing to bring the second unit back online almost immediately. A clutch on the gearbox output shaft allows to disengage power when alongside.

Derecktor has established itself as a leading manufacturer of high-speed craft in North America. Among the significant factors that have contributed to the success of the Derecktor built vessels are the very high standards of aluminum fabrication and machinery installation as well as the weight conscious approach to vessel construction.

**Contact Derecktor today to talk about your commercial vessel needs**

[www.derecktor.com](http://www.derecktor.com)

Voice: ++1-914-698-5020 Fax: ++1-914-698-6596 Toll free: 800-691-2100