

DERECKTOR 38m High Speed Ferry

Passenger-Only, Low-Wake Catamaran Design



The Derecktor 38 meter high-speed ferry is designed as a fast, efficient, catamaran passenger ferry for service in partially sheltered waters. This vessel provides good maneuverability and visibility from the wheelhouse. Three hundred fifty (350) seated passengers can be transported at a service speed of 33 knots at 85% of maximum continuous rating.

The vessel incorporates the latest developments in lightweight aluminum construction for strength, durability and ease of maintenance. The resiliently mounted house ensures passenger comfort, with quiet passenger spaces isolated from the vibration of the hulls. It is provided with a quad diesel engine and waterjet propulsion installation for redundancy and is designed to Lloyds Register Class 100A1, SSC, Passenger Catamaran, G2, LMC.

This ferry has a low draft, allowing access to shallow water terminals. The hull lines are designed to cause minimal wake wash effects. The entrances and interior incorporate accessible features for handicapped persons.

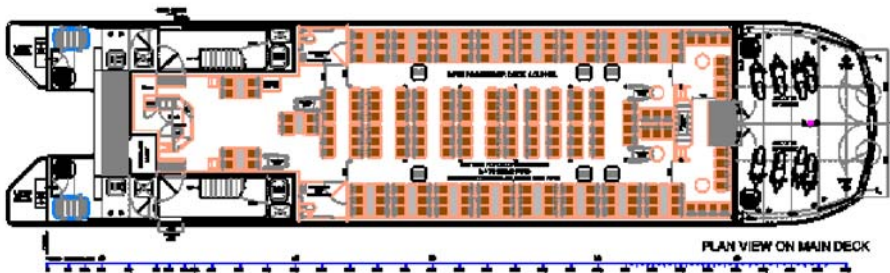
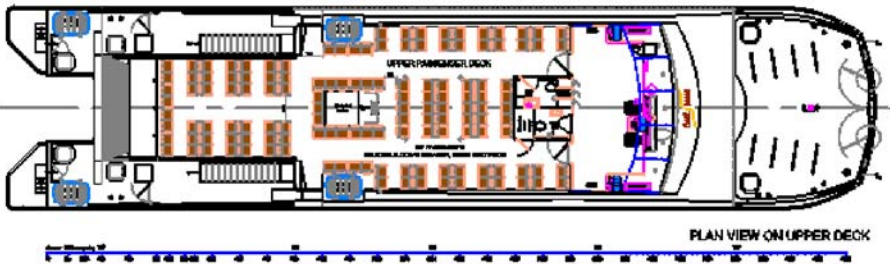
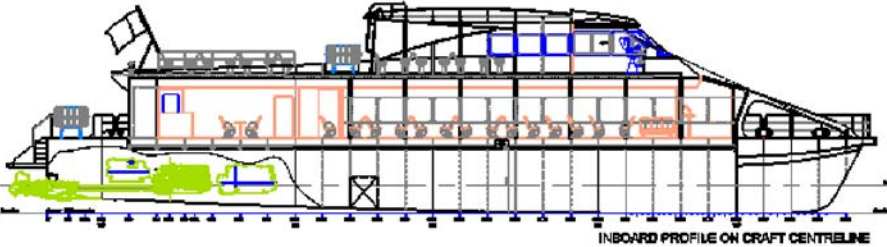
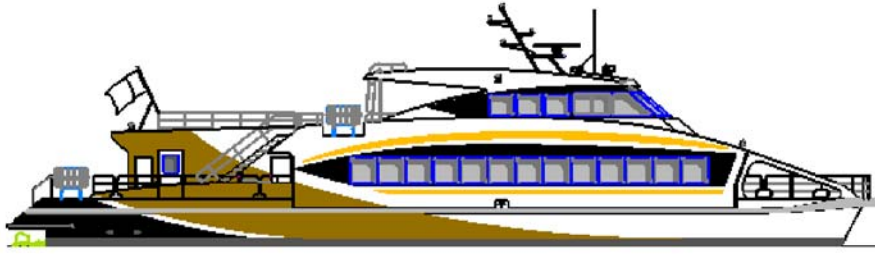


DERECKTOR SHIPYARDS

Since 1947

www.derecktor.com

311 E. Boston Post Road, Mamaroneck, New York 10543, USA



Type: High Speed Ferry
 Designer: Nigel Gee & Assoc.
 LOA: 37.8m (124ft)
 LWL: 34m (111.6ft)
 Beam: 9m (29.6ft)
 Draft: 1.4m (4.6ft)
 Service Speed: 33 knots
 Engines: 4 x MTU 12V2000
 Waterjets: 4 x Hamilton 512
 Hull & Superstr: Aluminum
 Passengers: 350
 Class: USCG 46 CFR,
 Subchapter "K" Lloyd's
 Register 100A1, SSC, HSC,
 G2, LMVCC

This ferry is arranged to allow boarding through generous double doors at the bow and aft, port and starboard and in both bulwarks with direct flow to house access doors. Access to the upper deck is available from the aft deck via stairways on both port and starboard sides. The aisle widths are generously sized to make boarding and loading as quick and efficient as possible.

The vessel has been designed with ease of use and maintenance in mind and the equipment comprises standard, well known components. Large unobstructed engine room soft patches make equipment easily accessible for inspection, service and removal. A marine vinyl finish is utilized as an option to paint, providing weight savings, longevity and ease of maintenance.

Derecktor has established itself as a global leader in the manufacturing of high-speed craft. Among the significant factors that have contributed to the success of Derecktor built vessels are the very high standards of aluminum fabrication and machinery installation as well as the weight conscious approach to vessel construction.

Contact Derecktor today to talk about your commercial vessel needs.

www.derecktor.com

Voice: ++1-914-698-5020 Fax: ++1-914-698-6596 Toll free: 800-691-2100